

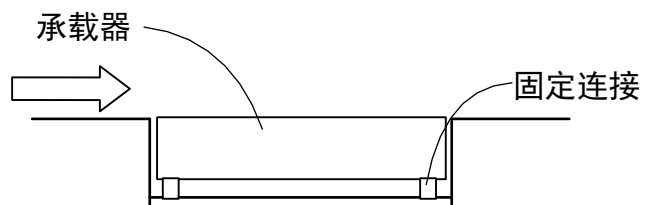
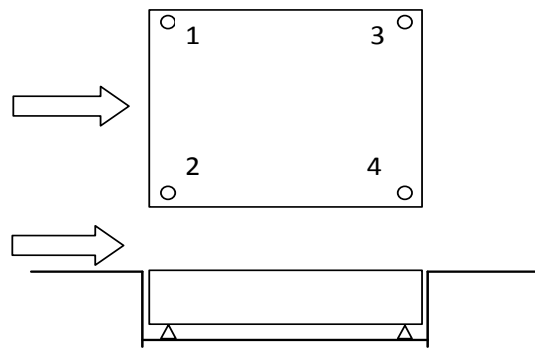
传感器波形在动态汽车衡状态检验中的应用研究

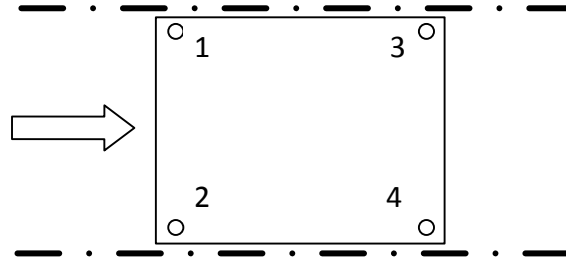
【摘要】

引言

一、动态公路车辆自动衡器及应用领域

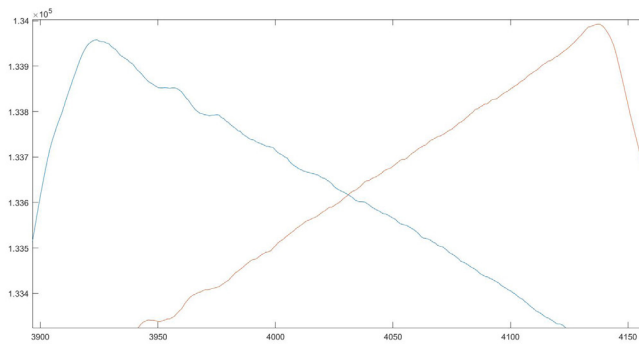
二、动态汽车衡的主要指标和检定规程



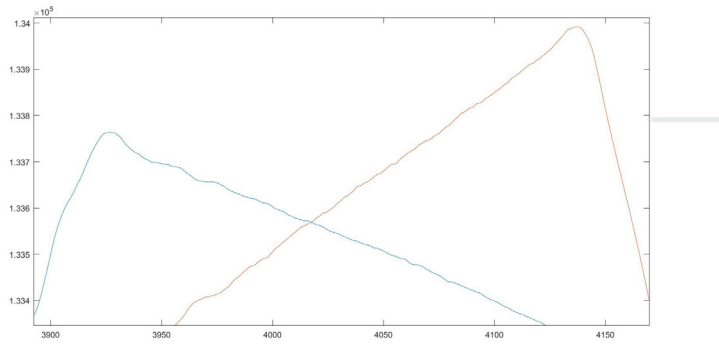


$$\left| \frac{(S1_{\max} - S2_{\max})}{(\text{mean}(S1 - S2))} \right|$$

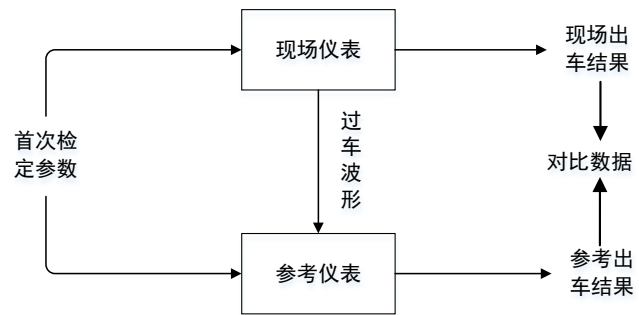
$$S_i(x_i) \cdot k$$

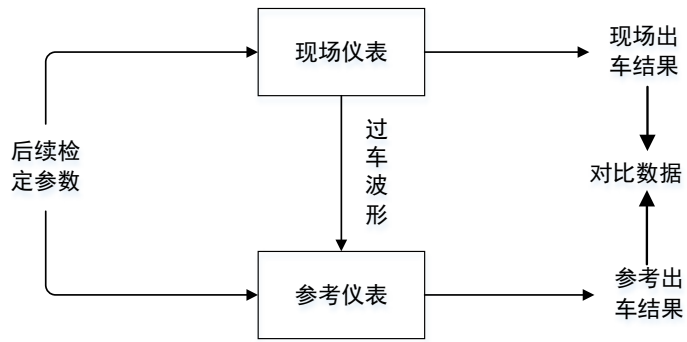


k



	$S1_{xxx}$ (kg)	$S2_{xxx}$ (kg)	$mean(S1 + S2)$ (kg)	δ	是否异常
首次检定	6562	6365	6552	0.03	否
第2次检定	6597	6730	6690	0.02	否
第3次检定	6587	6850	6650	0.04	否





四、结束语

【参考文献】

,

, ,